

Name: Lori McDermott

Title: The Homestead Pump House as a Landmark

Subject: History / Geography

State: Pennsylvania

Description

This museum activity / workshop will utilize a local landmark, the Carnegie Homestead Steel Works Pump House to aid attendees in understanding the site of the former Homestead Steel Works and the historical significance as location of battleground between the Pinkertons and the locked-out steelworkers in 1892. Also included in the workshop will be basic information regarding the function of the Pump House, efforts to restore and save the landmark building and current function of the building in 2022.

Introduction, Overview and Workshop Rationale –

Museum Guests and/or Student Group will be asked to participate in several activities designed to get participants interested in the landmark. The first activity will gauge if the participant is aware of the landmark, location of landmark and historical significance of the landmark thru a series of questions. These questions will be answered in follow-up activities along with additional landmark information that may facilitate interest and possible visit to the landmark. Participants will be informed thru the activities of a self-paced, cell phone walking tour in Homestead / Munhall PA in which the Pump House Landmark is one of the stops on the tour. (www.touranytime.org) The Rivers of Steel Battle of Homestead Walking Tour provides detailed accounts of the events before, during and after the battle between the locked-out steelworkers and the Pinkertons.

Goals –

- ✓ Participants will be able to define a landmark through a series of short activities that review the location of and the functional purpose of the Pump House during steel making process.
- ✓ Participants can apply and draw upon their prior knowledge about the Homestead Steel Works / 1892 Battle of Homestead and the significance of the Pump House to the Homestead Steel Works operation.
- ✓ Participants will be introduced to primary and secondary resources so they might derive meaning from examining photographs, drawings while being provided additional resources for self-paced exploration.

Activities –

Landmark Activity One

Directions – Please make an attempt to answer all of the following questions about the Pittsburgh area landmark in the **photos** below. This is to gauge what you know and what you may not know about the above location. Please make your best effort as you may be surprised at how much you currently know –



McDermott, Pittsburgh Landmark (street view), August, 6, 2022



McDermott, Pittsburgh Landmark (river view), July 13, 2022

Questions –

1. What is in the above picture?
2. Where is it located?
3. How far is this from the where you are located now?
4. What was inside the building?
5. What was the buildings' purpose?
6. How old is the building?
7. What is the building used for today?
8. Can this Landmark be tied to an event in Pittsburgh?

Landmark Activity Two

Directions – Please review the below link from the Rivers of Steel organization. Be sure to watch the short video towards the end of the link, then, if you would like, please go back to Activity One and answer the questions for a second time.

<https://riversofsteel.com/attractions/pump-house/> (secondary resource)

For Further Reading -

<https://battleofhomestead.org/the-pump-house/> (secondary resource)

<https://pitt.libguides.com/homestead> (primary resources / secondary resource)

Rina Youngner, “A Working Class Image of the Battle,” in *The River Ran Red: Homestead 1892*, by David Demarest and Fannia Weingartner, University of Pittsburgh Press, 1992.

The Battle for Homestead, 1880-1892: Politics, Culture, and Steel (Pittsburgh Series in Social & Labor History), by Paul Krause, University of Pittsburgh Press, 1992.

Landmark Activity Followup Discussion

Please read the below definition of the term LANDMARK:

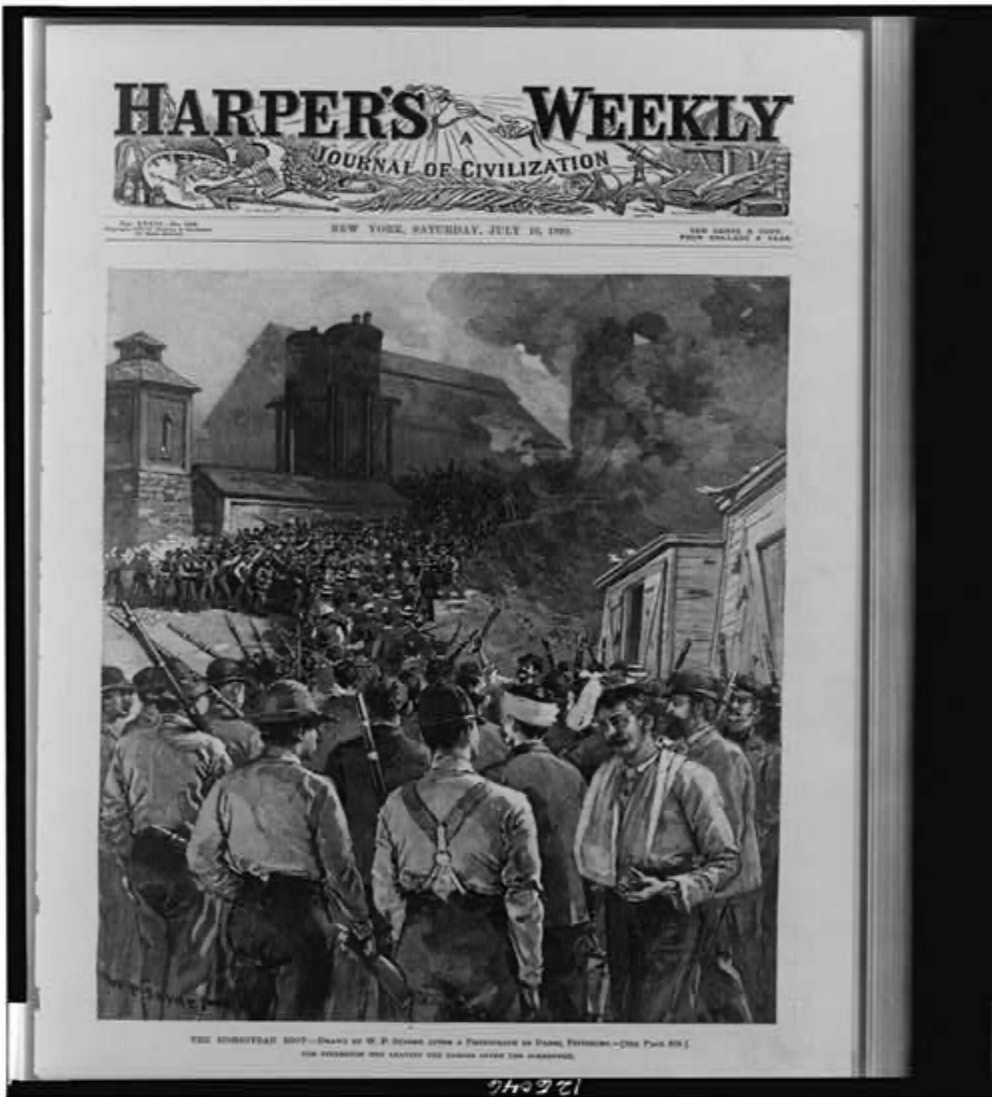
Landmark: Place with meaning in relation to history of region or nation and plays a role in collective memory of an event or values.

1. An object or feature of a landscape or town that is easily seen and recognized from a distance, especially one that enables someone to establish their location. "the spire was once a landmark for ships sailing up the river" synonyms: marker , mark , indicator , beacon
 - a. Based on this definition and your review of the below drawings and photographs, is the Pump House a landmark? Why or why not?
 - b. Should this place continue to serve as a Landmark? Why or why not?
 - c. What purpose does this landmark serve today and how are people from the region connected to it today? Please be specific.

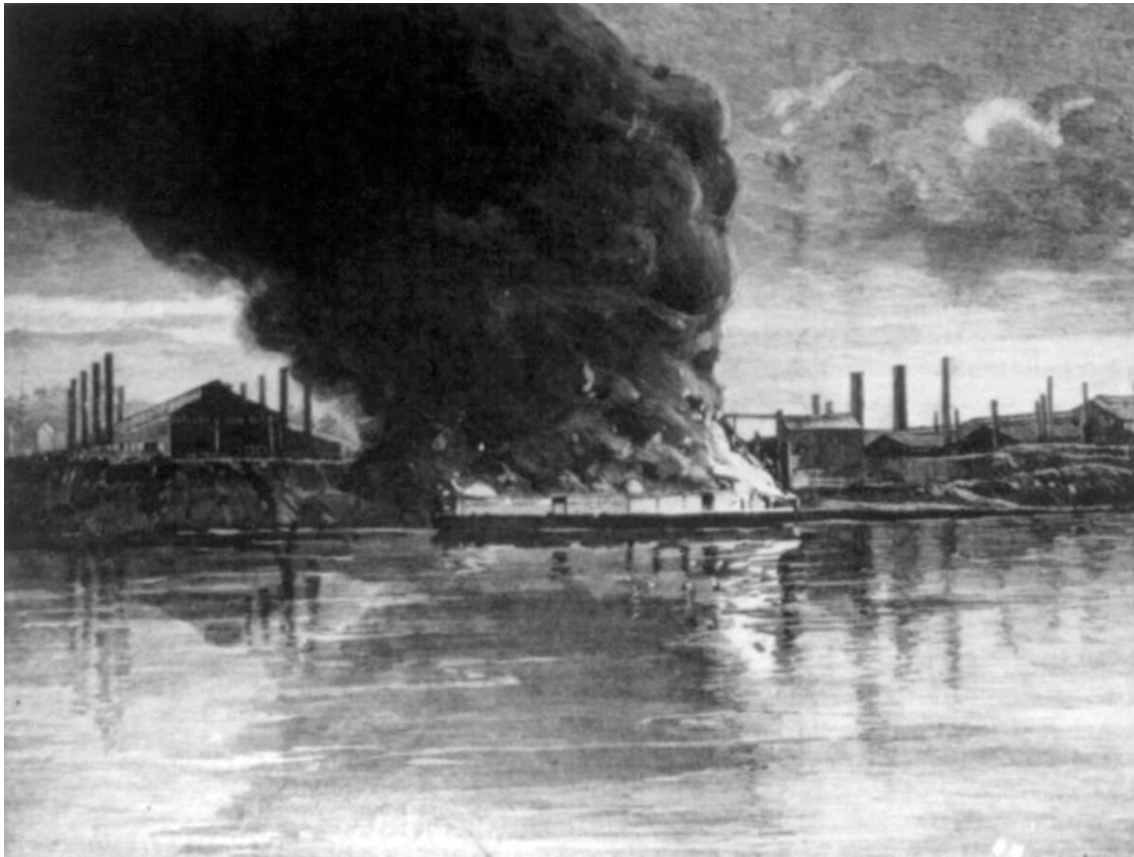
Photographs –

<https://www.loc.gov/pictures/item/00650151/> The Homestead Riot

Pump House is front page news in *Harper's Weekly, A Journal of Civilization* that was an American political magazine based in New York City and published from 1857 until 1916.



"The Burning Barges" during the Battle of Homestead Illus. in: *Harper's Weekly*, 1892 July 16.
Engraving by Charles Mentis, after photograph by B.H.L. (or B.L.H.) Dabbs (Pittsburgh)



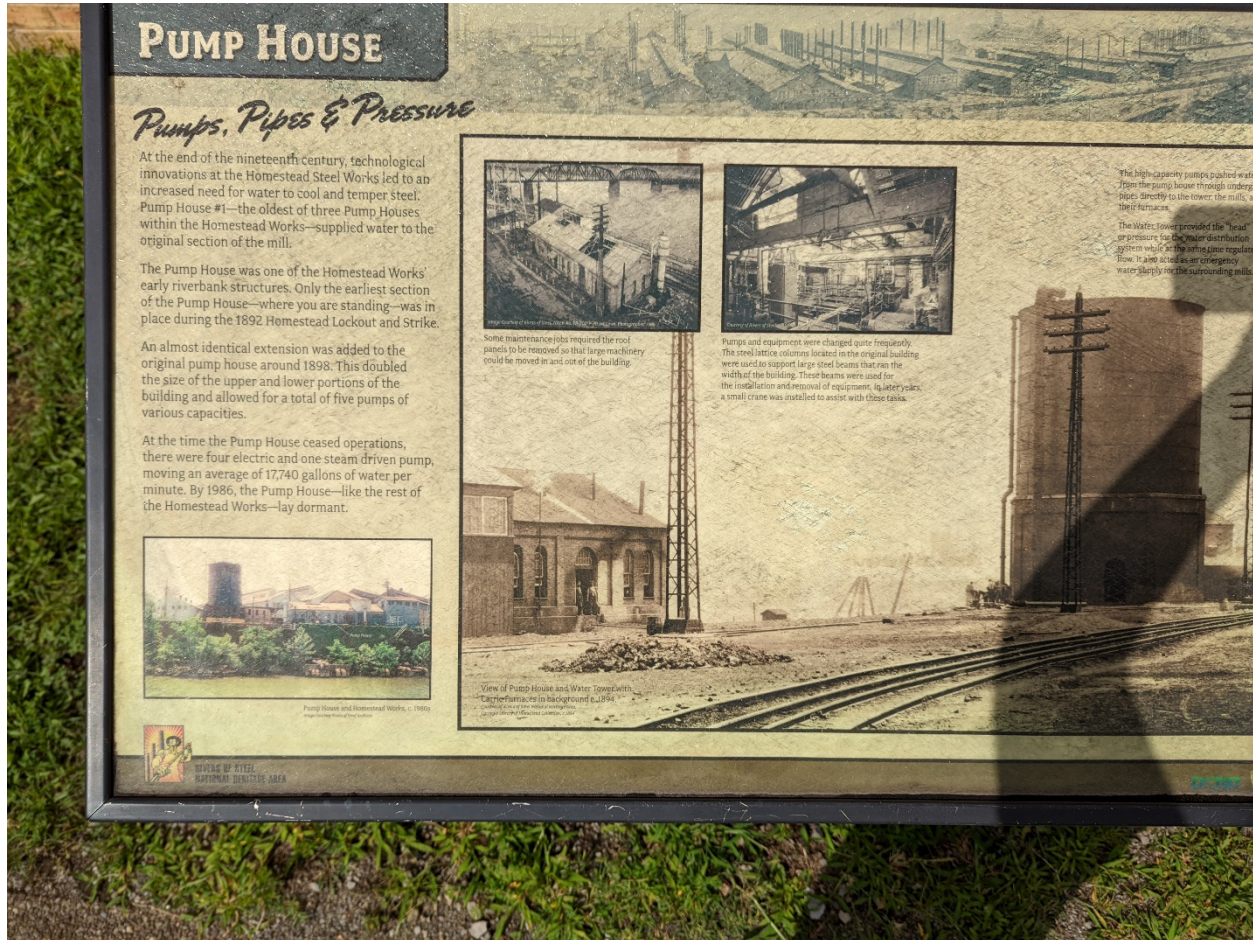
<https://explorepahistory.com/displayimage.php?imgId=1-2-1067>

In title and in imagery it is clear the viewpoint of the artist Edwin Rowe. Titled, *Great Battle of Homestead, Defeat & Capture of the Pinkerton Invaders July 6th 1892*. This work features a large central image surrounded by five smaller vignettes. In the center, you are provided a birds-eye view of the Homestead Mill from across the river, looking down from the hill that rises above the Monongahela on the Squirrel Hill side. The Pump House is visible, however, surrounded by smoke. The river is in the foreground, the mill stretches out on a great flat plain of ground behind it.



Further Independent Exploration –

Interested visitors are encouraged to go on the Battle of Homestead Walking Tour (www.touranytime.org / <https://riversofsteel.com/attractions/pump-house/>)



McDermott, Pump House Walking Tour Marker, August, 6, 2022

Vocabulary –

Industrial Revolution: A major change in society and economy brought on by the emergence of manufactory in the U.S. the late 1700s and 1800s.

Industrialization: The process of a society moving from a predominantly agricultural economy to a predominantly industrial one.

Landmark: A distinguishing feature within a landscape.

Lockout: the exclusion of employees by their employer from their place of work until certain terms are agreed to.

Mills: An early term to describe factories, usually those using water power.

Pinkerton Guard Agency: is a private security guard and detective agency established in the United States by Scotsman Allan Pinkerton in the 1850s

Primary vs. Secondary Resources: Primary sources are accounts of the event by people who experienced an event of the past, and secondary sources are people who did not experience the event in question, attempting to interpret its significance.

Technological Needs –

Access to Laptop, Tablet, or other devices capable of internet access.